

Rösler service

System and automation solutions

Magnetic separator

Magnetic separators are used for discharging non-magnetic particles like sand from the blast media. This reduces the wear of the turbine components. The Rösler magnetic separators reduce the amount of sand in the blast media down to 0.1 %.



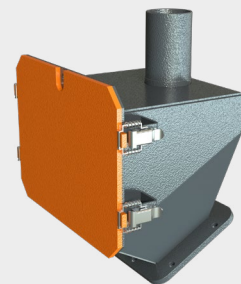
Blast media replenishment

Level sensors in the media hopper control a pneumatic valve. As soon as the media quantity in the hopper falls below a preset level, the valve opens and media is added to the system. The quick replenishment of missing media guarantees a stable operating mix.



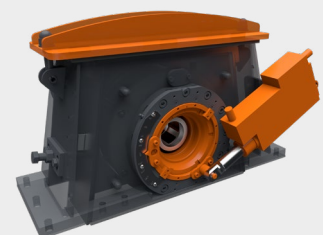
Screen insert

Any objects such as screws or other metal debris getting into a turbine pose a serious risk for damaging or destroying the turbines. The insertable screen, placed in the inlet tube of a turbine, removes all foreign objects from the media. The screen can be removed through a maintenance lid placed at the front of the inlet tube.



Automatic change of the blast pattern

Whenever a large variety of work pieces must be processed with different shot blast programs, a quick change of the blast pattern can significantly improve the shot blasting processes. The blast pattern changes are managed by the processing programs stored in the PLC. This allows substantial productivity improvements.



Automated shot blasting operations

The users of shot blasting systems are increasingly looking for automating their equipment. Automation not only relieves the employees from tedious, dangerous and monotonous work, but it also results in quality improvements and increased productivity. In addition, automated shot blasting operations facilitate production planning and allow the processing of more work pieces in shorter cycle times.

Before selecting a material handling tool, be it a linear handling system, a robot, etc., the following criteria must be evaluated:

- ▶ Work piece shape and fragility
- ▶ Work piece volume (batch sizes)
- ▶ Integration of the shot blast machine into the manufacturing flow
- ▶ Customer-specific technical equipment characteristics

Shot blast machines are generally linked with other manufacturing operations. Therefore, a detailed layout of the automation systems is essential. In close cooperation with your staff we prepare a master plan that includes a detailed description of your requirements, the project planning, the implementation as well as operator and maintenance trainings for the automated shot blasting system.

